



CONSION

Hangzhou Kangxun Filter Technology Co.,Ltd



For New Energy Industry Filtration System Solutions



COMPANY PROFILE



ISO Free of silicone oil Rohs Reach Food contact

Hangzhou ConSION Filter Technology Co., Ltd., a modern enterprise that focuses on product research and development, manufacturing, testing, and sales is in Taizhou. The company was founded in 1989 by a family with the belief of we can make people’s life better by providing solutions to make air and liquid safe and clean. Our main products are filter cloth, filter meshes, filter cartridges, filter bags, air filters, and others.

Our vision is Quality and Customer First. On the facility, we have over 100 employees following the ISO:9001 Quality Management System in their daily works. In the past 33 years, we have provided high-precision filtration, separation, and purification solutions to new and old customers all over the world.

In 33 years, we have been expending our capacity in R&D, production lines, and testing services. Now, our facility has 13,000 square meters. We built laboratories with all internationally trusted and standard equipment, 100,000 GMP certified workshops, and more than 30 different kinds of filter mesh & filter material production lines. Our main products are: Micro pleated filter cartridge, high flow filter cartridge, capsule filter, liquid filter bag, dust removal filter bag, and metal filter cartridge and customized filter accessories. These products are widely used in electronics, metallurgy, petrochemical, bio-pharmaceutical and automobile industries.

We can provide free samples and looking forward to work you.

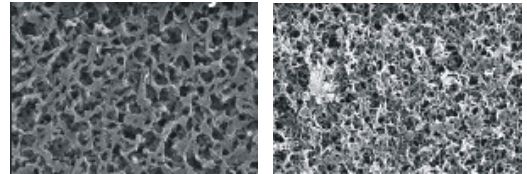


Authentication center

Particle sizing counting system
($0.15\ \mu\text{m}$ - $200\ \mu\text{m}$)



scanning electron microscope (SEM)



Pore size analyser

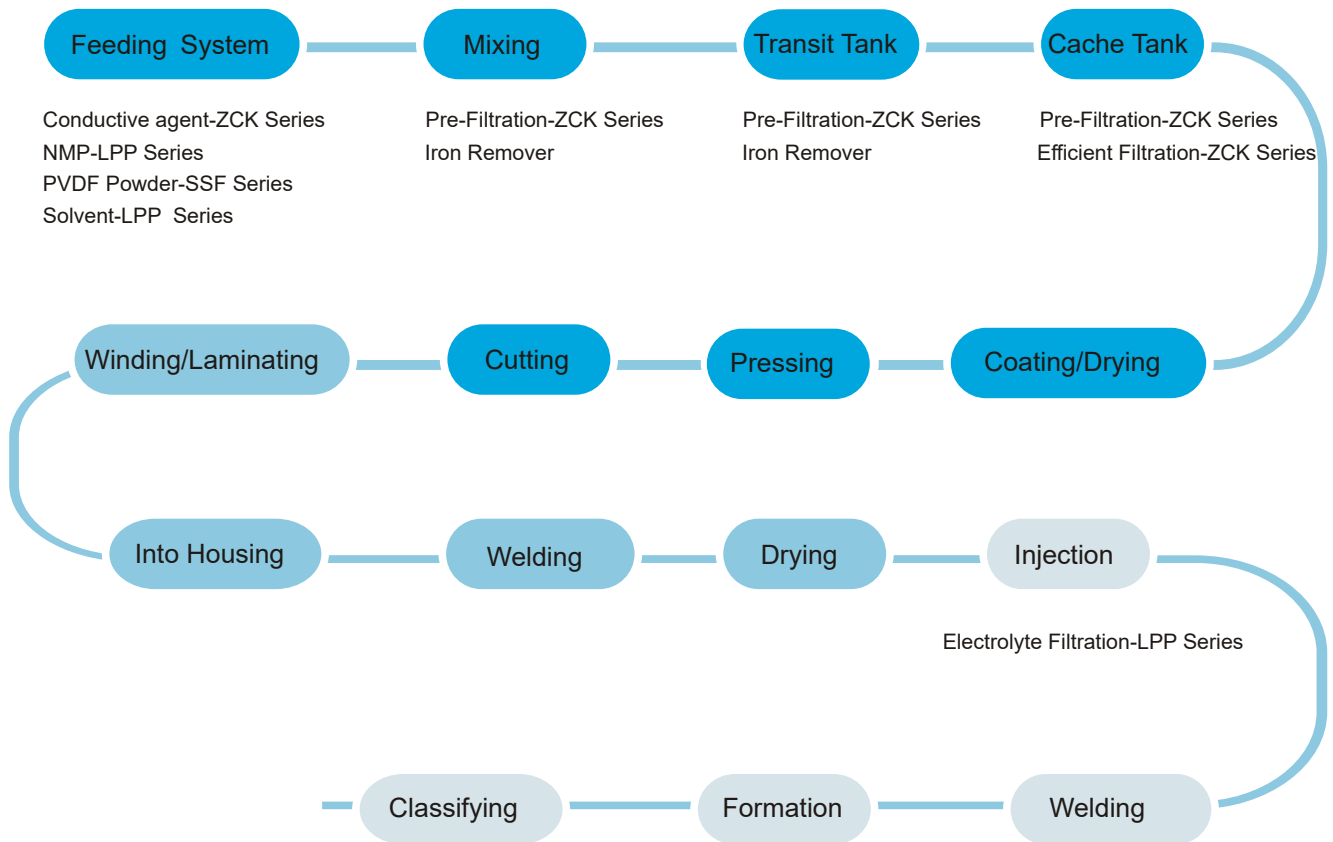


FTIR Spectrometer





Lithium Battery Pre-process Filtration Solutions



EnCap Filter Cartridge ZCK



ZCK Filter cartridge with a polypropylene cage, uses encapsulated technology. No adhesives or glue are used in the manufacturing process, and all bonding is done by thermal welding. The inner filter is designed by winding, which has the effect of deep filtering. The precision range can be 20~300um. The filter can be applied to the solution with high viscosity of filter material liquid.

Specification

- Reduce change-out and cleaning time
- Eliminates exposure of solvents and other hazardous materials
- Easy to use, one clear and simple way to install
- No exposure to hazardous materials

Technical specifications

- Product size
- Outer diameter: $\Phi 87.5\text{mm}$
- Inlet/Outlet: $\Phi 23\text{mm}$
- Length : 5"(195mm), 10"(325mm), 20"(583mm)

Construction materials

- Filter media : Polypropylene
- Outer cage/End caps/inner core : Polypropylene Sealing material : EPDM

Working Condition

- PH : 1-13
- Design temperature : 80°C
- Max. operating differential pressure : 0.3Mpa@20°C 0.2Mpa@80°C
- Design pressure : 0.6Mpa@20°C

Application:

- Battery slurry filtration ; Emulsion
- Coating liquid filtration ; Gel filtration

Order Information

Name	Micron	Length	Sealing Material
ZCK	20=20um	5=5"	E=EPDM
	30=30um	10=10"	
	50=50um	20=20"	
	75=75um		
	100=100um		
	150=150um		
	200=200um		
	300=300um		



ZCK Single-Round Filter Housing Series



ZCK Single-Round Filter Housing is specifically designed for Kangxun ZCK Filter Cartridge Series. The housing structural design eliminates dead angles and is easy to clean.

Due to stable flow rates, colloidal particles will be effectively removed. The housing base eliminates leakage while the top of the housing can be equipped with a splash-proof top cover to provide additional safety.

Features and Benefits

ZCK Single-Round Filter Housing is used in slurry coating filtration when the production line is placed below 25 meters. It is easy to install and clean which makes it ideally suited to replace traditional stainless steel mesh filters and stainless steel housing combination.

Materials of Construction

Shell/Body : SUS304 / SUS316L

Clamp / Leg : SUS304

O-ring / Gasket : EPDM

Length : 5"/10"/20"

Operating Conditions

Max. Operating Pressure : 0.6MPa(6Bar)

Max. Operating Temperature : 135°C Design

Temperature : 140°C

Order Information

Name	Material	Filter Type	Sealing Material
H-ZCK-S	01=SUS304	A=ZCK-05"	E=EPDM
	02=SUS316L	B=ZCK-10"	
		C=ZCK-20"	



EnCap Filter Cartridge ZCK-H



ZCK-H Filter cartridge with a polypropylene cage, uses encapsulated technology. No adhesives or glue are used in the manufacturing process, and all bonding is done by thermal welding. The inner filter is pleated, which has the effect of deep filtering. The precision range can be 50~300um. The filter can be applied to the solution with high viscosity of filter material liquid.

Specification

Reduce change-out and cleaning time.
 Eliminates exposure of solvents and other hazardous materials.
 Easy to use, one clear and simple way to install.
 No exposure to hazardous materials.

Technical specifications

Product size
 Outer diameter: Φ 168mm
 Inlet/Outlet: Φ 42mm
 Length : 10" (335mm)

Construction materials

Filter media : Polypropylene
 Outer cage/End caps/inner core : Polypropylene
 Sealing material : EPDM

Working Condition

PH: 1-13
 Design temperature: 80°C
 Max. operating differential pressure: 0.3Mpa@20°C 0.2Mpa@80°C
 Design pressure: 0.6Mpa@20°C

Application:

Battery slurry filtration : Emulsion
 Coating liquid filtration : Gel filtration

Order Information

Name	Micron	Length	Sealing Material
ZCK-H	50=50um 75=75um 100=100um 150=150um 200=200um 300=300um	10=10"	E=EPDM

ZCK-H Single-Round Filter Housing Series

ZCK-H Single-Round Filter Housing Series is designed to be used with ZCK-H Filter Cartridge.

Features and Benefits

ZCK-H Single-Round Filter Housing is used in slurry coating filtration when the production line is placed below 50 meters or requires high flow.

Materials of Construction

Shell / Body : SUS304 / SUS316L

Drain : SUS304 / SUS316L

Clamp / Leg : SUS304

Operating Conditions

Max. Operating Pressure : 0.6 MPa 6Bar

Max. Operating Temperature : 135°C

Design Temperature : 140°C



Order Information

Name	Material	Connection	Sealing Material
H-ZCK-130	01=SUS304 02=SUS316L	QA=Quick Flange DN25 QB=Quick Flange DN38 S=Customized	E=EPDM

EnCap Filter Cartridge ZCK-M



ZCK-M Filter cartridge with a polypropylene cage, uses encapsulated technology. No adhesives or glue are used in the manufacturing process, and all bonding is done by thermal welding. The inner core uses multiple winding filters to increase the filtration area and speed up the flow rate. The precision range can be 20~300 um. The filter can be applied to the solution with high viscosity of filter material liquid.

Specification

Reduce change-out and cleaning time
 Eliminates exposure of solvents and other hazardous materials Easy to use, one clear and simple way to install
 No exposure to hazardous materials

Technical specifications

Product size
 Outer diameter: Φ245mm
 Inlet/Outlet: Φ34.2mm
 Length: 10"(345mm)

Construction materials

Filter media : Polypropylene
 Outer cage/End caps/inner core : Polypropylene
 Sealing material : EPDM

Application:

Battery slurry filtration : Emulsion
 Coating liquid filtration : Gel filtration

Working Condition

PH : 1-13
 Design temperature : 80°C
 Max. operating differential pressure : 0.3Mpa@20°C 0.2Mpa@80°C
 Design pressure : 0.6Mpa@20°C

Name	Micron	Length	Sealing Material
ZCK-M	20=20um	10=10"	E=EPDM
	30=30um		
	50=50um		
	75=75um		
	100=100um		
	100=150um		
	200=200um		
	300=300um		



ZCK-M Filter Housing Series



Matched with ZCK-M Cartridge to use special for high-speed line high-flow slurry coating filtration less slurry residue easy to replace shorten the time to change cartridge and improve efficiency.

Characteristics

Super high flow design is suitable for high speed slurry coating filtration demand.

Material

Shell / Body : SUS304 / SUS316L

Drain : SUS304 / SUS316L

Clamp/Legs : SUS304

Characteristics

Design Pressure : 0.6 MPa 6Bar

Operation Temperature : 135°C

Design Temperature : 140°C

Order Information

Name	Material	Connection	Sealing Material
H-ZCK-M	01=SUS304 02=SUS316L	QA=Quick Flange DN25 QB=Quick Flange DN38 S= Customized	E=EPDM

Electrolyte Solvent Filtration Solutions

Economical, Low-extraction Filter

LPP Series

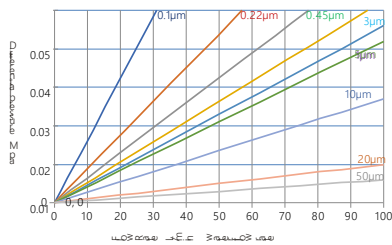


LPP series filters is made of polypropylene membrane and welded with other polypropylene parts. Contains no binders or additives. High dirt holding capacity and low differential pressure, suitable for process water, acids, alkalis and organic solvents.

Composition

Filter media : Polypropylene membrane
 Support/Drain layer : Polypropylene
 Core/Cage/Adaptor : Polypropylene
 Sealing : EPDM, Viton coated w/ PTFE
 Max. Temperature : 80°C
 Max. Pressure difference : 0.42Mpa/25°C

Differential pressure/Water flow



Chemical High Efficiency Filter

PF/HPF Series

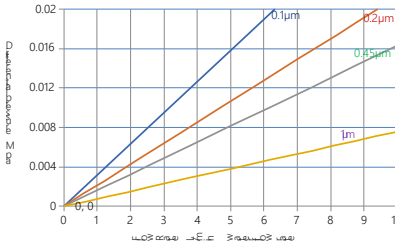


PF series filters adopts hydrophobic PTFE membrane as filter medium, HPF series filters adopts hydrophilic PTFE membrane. which has excellent chemical ability, strong acid and alkali resistance, and is suitable for organic solvent and gas filtration.

Composition

Filter media : PTFE membrane
 Support/Drain layer : Polypropylene
 Core/Cage/Adaptor : Polypropylene
 Sealing : EPDM, Viton coated w/ PTFE
 Max. Temperature : 80°C
 Max. Pressure difference : 0.42Mpa/25°C

Differential pressure/Water flow



High-viscosity Filter

GF Series

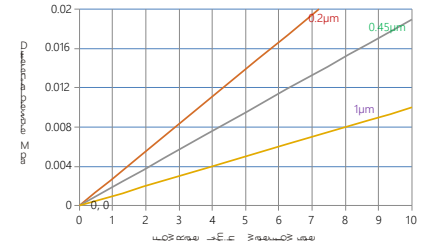


GF series filters adopts glass fiber micro membrane as filter medium, Acid and alkali resistance, strong oil resistance, rigid structure, suitable for filtering high viscosity solvents.

Composition

Filter media : Glass fiber micro membrane
 Support/Drain layer : Polypropylene
 Core/Cage/Adaptor : Polypropylene
 Sealing : EPDM, Viton coated w/ PTFE
 Max. Temperature : 80°C
 Max. Pressure difference : 0.42Mpa/25°C

Differential pressure/Water flow



Order Information

Name	Micron	Adapter	Length	Sealing Materials
LPP	010=0.1µm	DOE=DOE	5=5in	E=EPDM
	022=0.22µm	TF=222/PIN	10=10in	F=Viton coated with PTFE
	045=0.45µm	SF=226/PIN	20=20in	
	1=1µm	TC=222/Cap	30=30in	
	3=3µm	SC=226/Cap	40=40in	
	5=5µm			
	10=10µm			

Name	Micron	Adapter	Length	Sealing Materials
HPF	010=0.1µm	DOE=DOE	5=5in	E=EPDM
	022=0.22µm	TF=222/PIN	10=10in	F=Viton coated with PTFE
	045=0.45µm	SF=226/PIN	20=20in	
	1=1µm	TC=222/Cap	30=30in	
		SC=226/Cap	40=40in	

Name	Micron	Adapter	Length	Sealing Materials
PF	010=0.1µm	DOE=DOE	5=5in	E=EPDM
	020=0.2µm	TF=222/PIN	10=10in	F=Viton coated with PTFE
	045=0.45µm	SF=226/PIN	20=20in	
	1=1µm	TC=222/Cap	30=30in	
		SC=226/Cap	40=40in	

Name	Micron	Adapter	Length	Sealing Materials
GF	020=0.2µm	DOE=DOE	5=5in	E=EPDM
	045=0.45µm	TF=222/PIN	10=10in	F=Viton coated with PTFE
	1=1µm	SF=226/PIN	20=20in	
	3=3µm	TC=222/Cap	30=30in	
		SC=226/Cap	40=40in	

Electrolyte Solvent Filtration Solutions

High Solid Particle Filter

HIPP Series



HIPP series adopts multi-layer polypropylene filter membranes with different pore sizes to form a gradient filtration structure. With good chemical compatibility and acid and alkali resistance, it is suitable for organic solvent filtration of high solid particles.

Composition

Filter media: Polypropylene membrane
 Support/Drain layer: Polypropylene
 Core/Cage/Adaptor: Polypropylene
 Sealing: EPDM, Viton coated w/ PTFE
 Max. Temperature: 80°C
 Max. Pressure difference: 0.42Mpa/25°C

Rolled Filter

RC Series



RC series uses polypropylene membranes with rolled design and has the effect of depth filtration. No adhesives or glues are used in the manufacturing process, all bonding is done by thermal welding. With good chemical compatibility and acid and alkali resistance, it is suitable for filtration of slurry.

Composition

Filter media: Polypropylene membrane
 Support/Drain layer: Polypropylene mesh
 Core/Cage/Adaptor: Polypropylene
 Sealing: EPDM, Viton coated w/ PTFE
 Max. Temperature: 80°C
 Max. Pressure difference: 0.3Mpa/25°C

Stainless Steel Mesh Filter

SSF Series

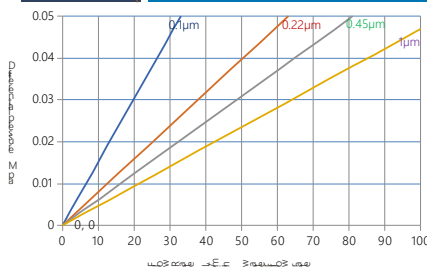


SSF are robust and versatile mesh filters with easy-to-clean surfaces. The stainless steel mesh is mounted on a stable core support made of stainless steel perforated sheet, then the end caps are welded. Suitable for slurry filtration and customization.

Composition

Filter media: 304/316 Stainless Steel Mesh
 Support/Drain layer: SUS304/SUS316
 Core/Cage/Adaptor: SUS304/SUS316
 Sealing: EPDM, Viton coated w/ PTFE
 Max. Temperature: 480°C
 Max. Pressure difference: 0.5Mpa/25°C

Differential pressure/Water flow



Order Information

Name	Micron	Adapter	Length	Sealing Materials
HIPP	010=0.1µm	DOE=DOE	5=5in	E=EPDM
	022=0.22µm	TF=222/PIN	10=10in	F=Viton coated with PTFE
	045=0.45µm	SF=226/PIN	20=20in	
	1=1µm	TC=222/Cap	30=30in	
		SC=226/Cap	40=40in	

Name	Micron	Length	Sealing Materials
RC	20=20µm	5=5"	E=EPDM
	30=30µm	10=10"	F=Viton coated with PTFE
	50=50µm	20=20"	
	75=75µm		
	100=100µm		
	150=150µm		
	200=200µm		
	300=300µm		

Name	Micron	Adapter	Length	Sealing Materials
SSF	045=0.45µm	DOE=DOE	5=5in	E=EPDM
	1=1µm	GTC=222SUS/Cap	10=10in	F=Viton coated with PTFE
	3=3µm	GTF=222SUS/PIN	20=20in	
	5=5µm	GSF=226SUS/PIN	30=30in	
	10=10µm	GSC=226SUS/Cap	40=40in	
	20=20µm	Thread		
	50=50µm			

CONSION™

HANGZHOU KANGXUN FILTER TECHNOLOGY CO.,LTD

Consion China

Address : Room A3-1410, Canal Vanke Center, No. 888 Pingshui East Road, Gongshu District, Hangzhou

ATTN: Hunter Ge E-mail:info@zhenxingfiltech.com

TEL : +86 571 56713866

FAX : +86 576 8366 1619

Website: www.consionfiltration.com

Factory Add: No.51 Huaqian Road,Pingqiao Huaqian Industry Zone,Tiantai City,
Zhejiang Province,China 317203

TEL : +86 576 8366 1333

Consion Korea

Address : #1104 Byucksan Sunyoung Technopia, 13 Ojeongongeop-gil, Uiwang-si, Gyeonggi-do, 16072, South Korea

Warehouse : 122-53, Cheomgeop 7-ro, Gumi-si, Gyeongsangbuk-do (1278 Sindang-ri, Sandong-eup)

Contact : T.82 70 4366 2227 / E-mail. consionkorea@gmail.com

Website: www.consion-korea.com

Consion Europe

Address : Vasagatan 35 - 411 37 Gothenburg - Sweden

Contact : T. 46317880716 / Email. peter@jpsgroup.se